

# **VC-C4 Camera Version 1.3**

## **Control Software Guide**

### Contents

1. Hardware and Software Requirements
2. Installing the Software
3. Launching the Software
4. Using the Software

Version 1.1 22 June 2001

Megaton House Ltd.

## 1. Hardware and Software Requirements

A PC with Windows 95/98/2000 or Windows NT 4.0 installed

- VC-C4 Communication Camera
- Camera control cable

The PC must be equipped with an RS-232C (serial) port.

Installation requires roughly 5 MB of free hard disk space.

## 2. Installing the Software

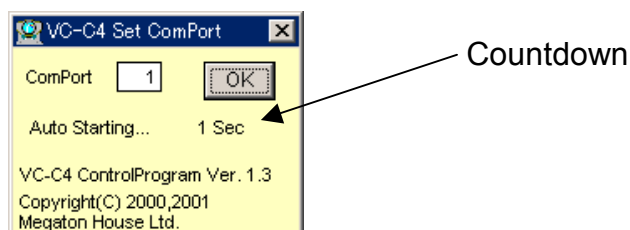
Run the "Setup-e.exe" program (for English) or "Setup-j.exe" program (for Japanese)

## 3. Launching the Software

You can launch the software by selecting "VC-C4CONT" - "VC-C4CONT" from "Programs" in the Start menu or click on "VC-C4CONT" (Short Cut Icon) at the Desktop of your PC.

## 4. Using the Software

### Startup screen

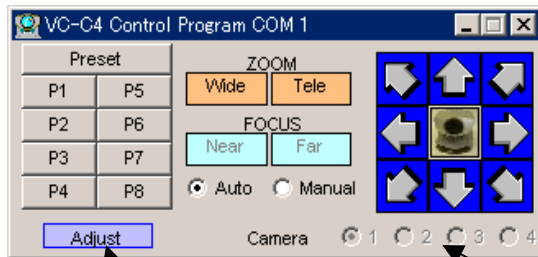


After a 3-second countdown, you are switched to the camera control window.

You can stop the countdown and change the COM port setting by clicking the screen. Then click the "OK" button to enable the new COM port.

The next time you launch the software, the new COM port will be displayed.

### Camera control window



Detailed settings button

Cascade camera selection

### Pan/Tilt:

Control the pan and tilt by clicking the arrows. Right-click to pan and tilt at low speed. Release the mouse button to stop camera movement.

### Zoom:

Control zooming by clicking "Wide" and "Tele". Right-click to zoom in and out at low speed. Release the mouse button to stop zooming.

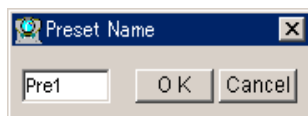
### Focus:

Select "Auto" or "Manual". When "Manual" is selected, you can use the "Near" and "Far" controls.

### Presets:

Click any of the 8 buttons to select a preset camera position. The camera is panned, tilted and zoomed to the position stored in memory.

Right-click to display the preset registration window.



### Preset memory:

When you click "Preset", the control software switches to memory mode and the display starts to flash. Click one of the 8 preset position buttons to store the current camera settings in memory.

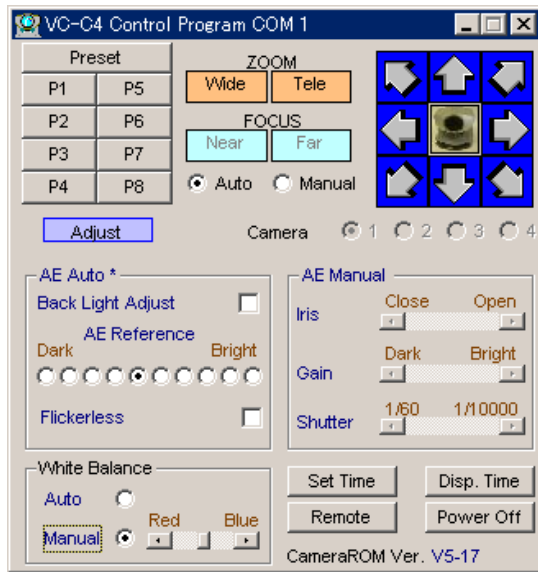
### Cascade camera selection:

Use these radio buttons to select the cascade-connected cameras.

The software checks the number of connected cameras during program startup.

### Detailed settings:

Clicking "Adjust" expands the camera control window.



Select "AE Auto" or "AE Manual" mode.

Click in an area of the screen to switch to that mode.

Back Light Adjust: Corrects for backlit scenes.

Flickerless (for areas with a 50 Hz power supply)

Setting "White Balance" to "Manual" allows you to adjust the color balance.

Set Time: Downloads PC clock data.

Disp Time: Displays the time in the camera image.

Remote: Permits remote control operation.

Power Off/On: Switches the camera on or off.

## VC-C4 Control Software Guide

The product and company names used in this document are trademarks or registered trademarks of the respective companies.

### Notes:

- The contents of this product are subject to change without notice.