

SC Controller Rack-Mount Datasheet

Standard Features

- 19-Inch Rack-Mount Compatibility
- Simple Bracket and Panel Installation
- Kits available for...
- Color Matched to Existing Equipment
- Rack-Mount Kits for 2U and 3U Heights



SC-200 and SC-400 Controllers shown with Kohzu optional rack-mount brackets and extension-panels.

In order to fit SC and SD controllers with optional rack-mount hardware, one must first remove temporary (decorative and disposable) cover plates located on either side of Kohzu control units. Removing these plates will provide access to essential bracket and panel mounting holes. Simple step by step procedures for the successful installation of Kohzu rack-mount hardware accessories follows...

CAUTION!

Before opening any electrical device, be sure to turn off all power and disconnect unit from electrical source by removing its electrical cord.



Kohzu Precision Co., Ltd.

2-6-15 Kurigi, Asao-ku
Kawasaki, Kanagawa 215-8521

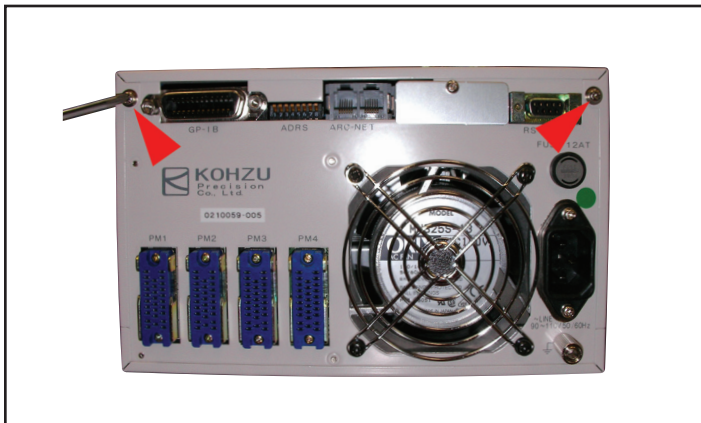
Telephone	81-44-981-2131
Facsimile	81-44-981-2181
E-Mail	e-sale@kohzu.co.jp
Web	www.kohzu.co.jp

Kohzu America, Inc.

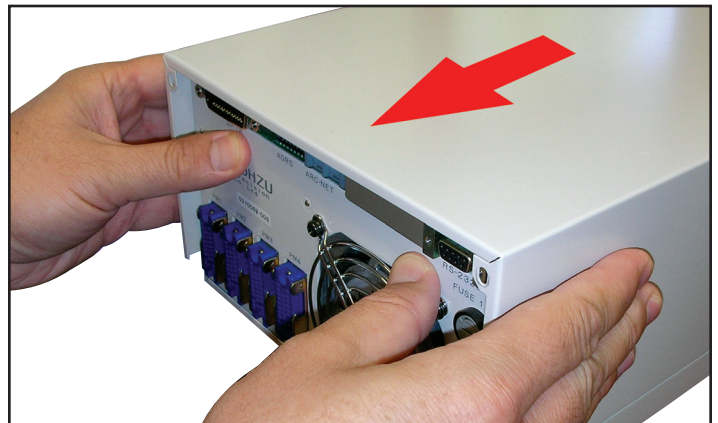
5674 Stoneridge Drive, Suite 202
Pleasanton, CA 94588

Telephone	925-460-1350
Facsimile	925-460-5050
E-Mail	sales@kohzuamerica.com
Web	www.kohzuamerica.com

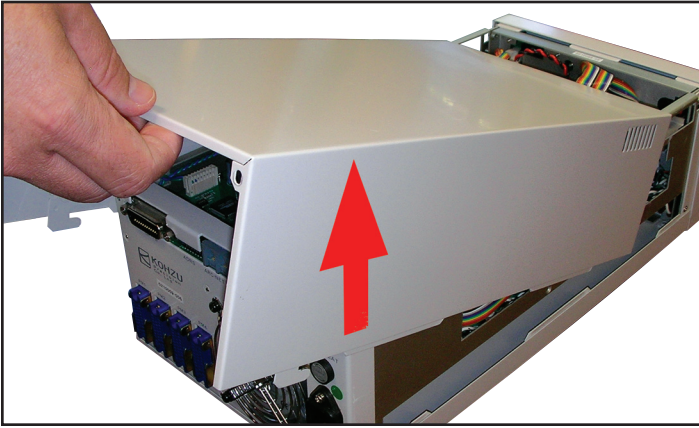
Step-1 Remove two (2) screws on SC controller's back-panel



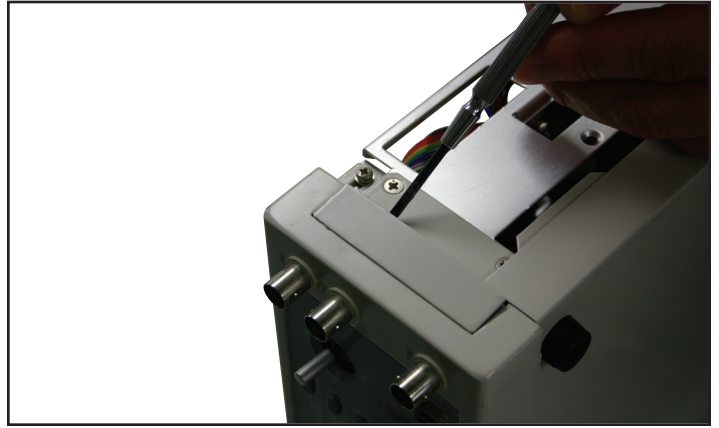
Step-2 Slide cover-panel towards rear of controller case about 1-inch



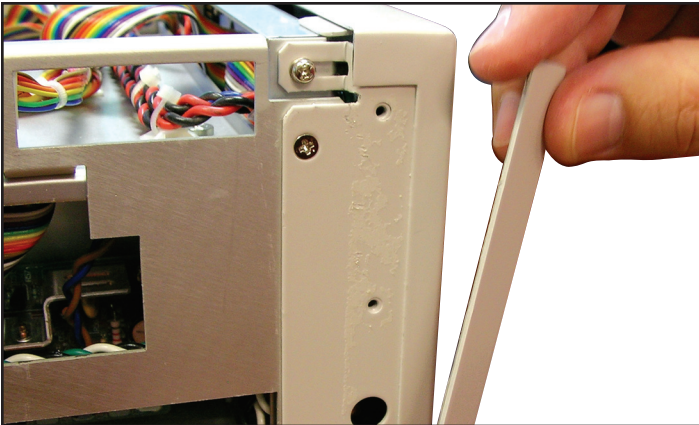
Step-3 Pull top-panel up and off



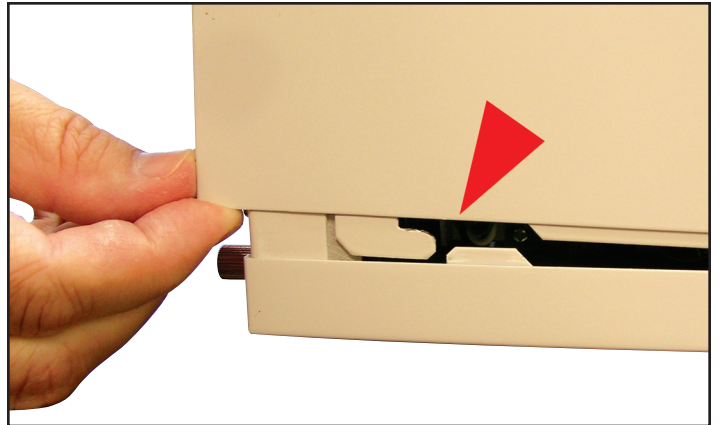
Step-4 Set controller on side and pry decorative plate with screwdriver



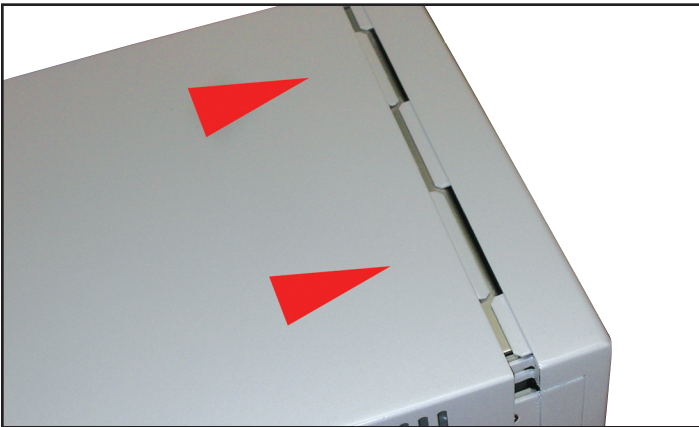
Step-5 Remove decorative plate from both sides and discard



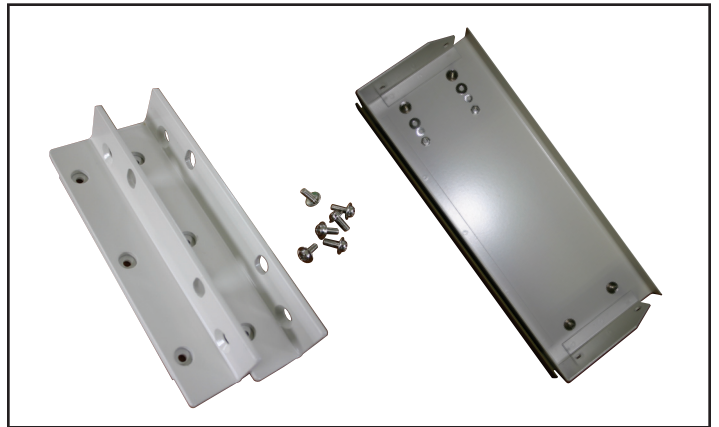
Step-6 Replace cover-panel... be sure that cover tabs are properly aligned



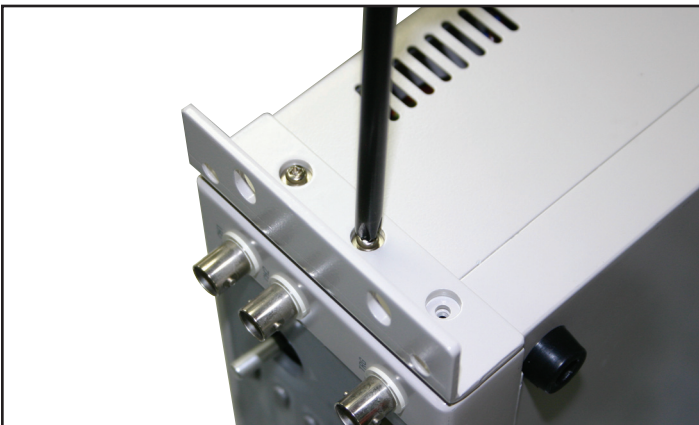
Step-6 Replace cover-panel... be sure that cover tabs are properly aligned



Step-7 Select rack-mount accessories to mate with SC controller



Step-8 Attach rack-mount brackets using the screws provided



Step-9 Attach rack-mount extension panel for full rack installation

