

NOTES:

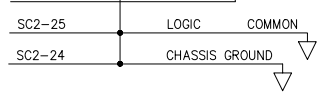
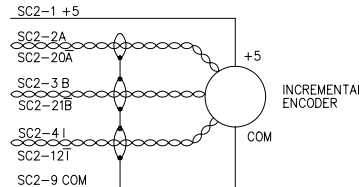
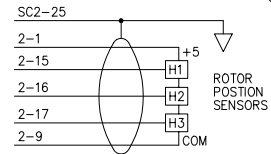
1. ENABLE THE DRIVE BY PRESENTING LESS THAN 1KW TO GROUND, OR TTL LOW. DISABLE BY PRESENTING GREATER THAN 1KW, OR TTL HIGH TO +24V.

REVISIONS			
REV	DESCRIPTION	DATE	APPROVED

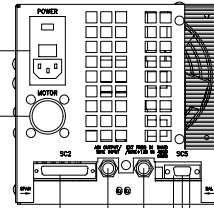
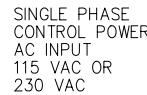
FRONT VIEW

- SC2-11 CLAMP SOLENOID(OV=CLAMP)
- SC2-14 MAIN AIR SENSE (STOP)
- SC2-18 BEARING AIR SENSE (STOP)
- SC2-19 CLAMP AIR SENSE (DISABLE)
- SC2-7 AUX FAULT 1 (DISABLE)

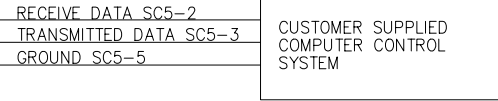
- TORQUE COMMAND / SC2-5 OPTIONAL VELOCITY COMMAND
- SC2-6 EXTERNAL ENABLE INPUT (SEE NOTE 1)



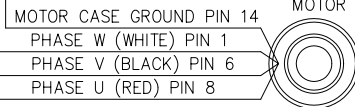
A, B, OR I 50 ohm OUTPUT (SOFTWARE SELECTABLE)
SINE INPUT (OPTIONAL)



SC5-8 AT SPEED OUTPUT 0 = NOT AT SPEED/1 = AT SPEED
 SC5-6 AT ZERO SPEED OUTPUT 0 = NOT AT ZERO SPEED/1 = AT ZERO SPEED



EXTERNAL FREQUENCY INPUT
SINE +120 INPUT (OPTIONAL)



LA-2000 MODEL 62 TYPE 2 CONNECTION DIAGRAM FOR RS-232 CONTROLLED ENCODER COMMUTATED SYSTEMS WITH SIX STEP START UP

DRAWN BY T. Downey	DATE 7-26-02	DRAWING NUMBER 1404040	REVISION LEVEL NONE
APPROVED BY TD	DATE 10-24-02	SCALE 1/4	SIZE B
		SHEET 1 OF 1	