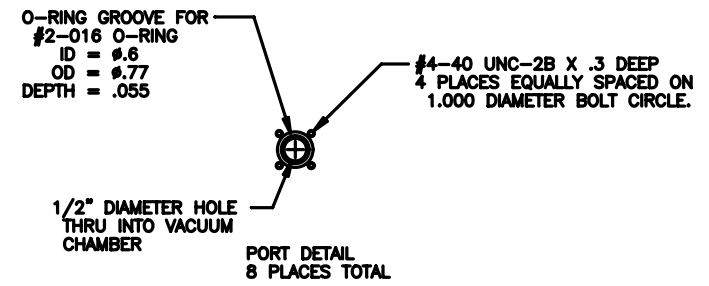
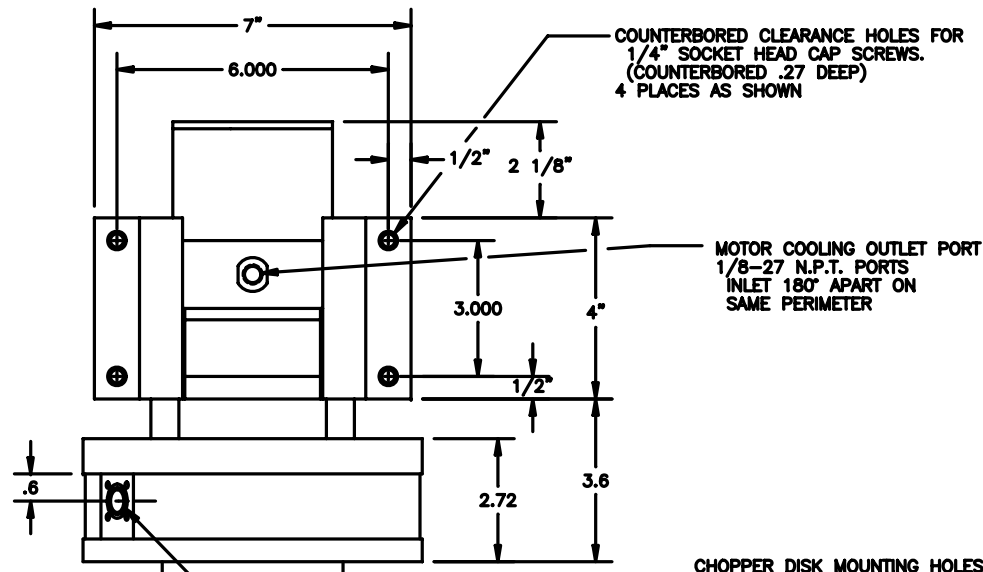


DATE	REV	REVISION	BY
	A	ISSUE FOR MANUFACTURE	JLL
	B	ISSUE FOR ASSEMBLY	JLL

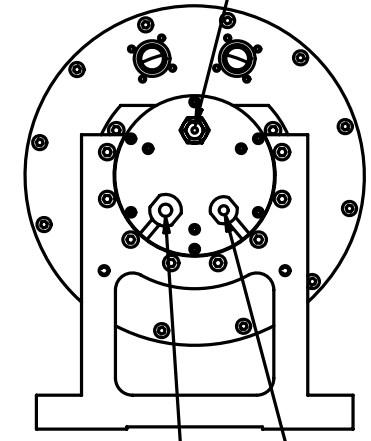
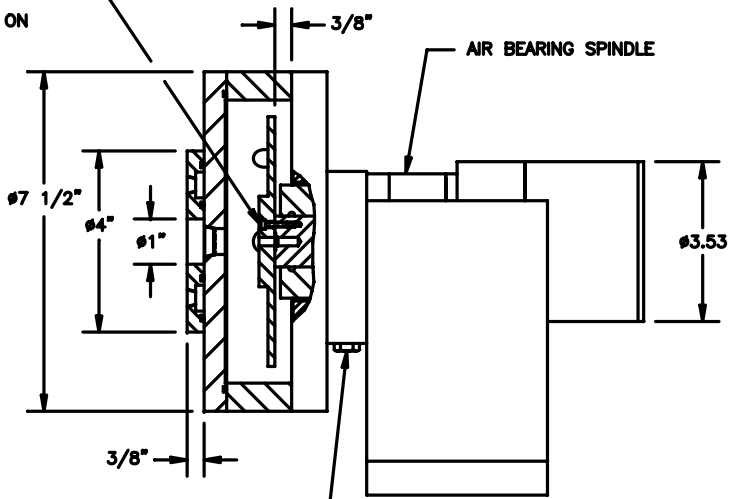
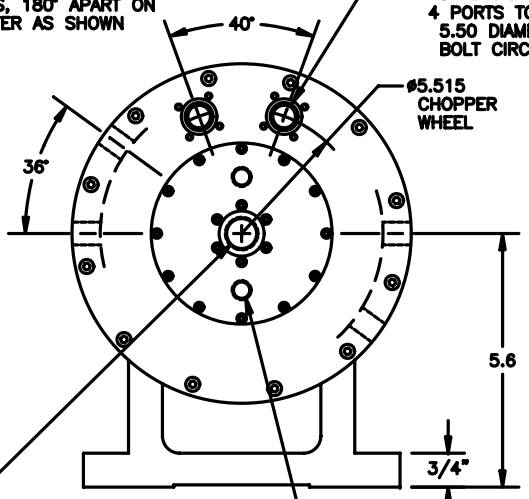


PERPENDICULAR BEAM PORT SEE PORT DETAIL FOR DIMENSIONS 4 PORT TOTAL 2 PLACES, 180° APART ON PERIMETER AS SHOWN

PARALLEL BEAM PORT SEE PORT DETAIL FOR DIMENSIONS 4 PORTS TOTAL ON 5.50 DIAMETER BOLT CIRCLE.

CHOPPER DISK MOUNTING HOLES #4-40 UNC-2B X 3/8" DEEP 6 PLACES EQUALLY SPACED ON .750 DIA. BOLT CIRCLE

VACUUM GROOVE EXHAUST PORT FOR 1/8" OD STANDARD FLARELESS TUBE.



ENCODER/CONTROL CABLE CONNECTOR #DB-25P

MOTOR POWER CABLE CONNECTOR AMP #206153-1

VACUUM CHAMBER PORT 3/8-18 N.P.T.

VACUUM CHAMBER COOLING INLET PORT 1/8-27 N.P.T. PORTS OUTLET 180° APART ON 2.5 DIA. BOLT CIRCLE

AIR BEARING AIR INLET WITH 1/16-27 N.P.T. THREAD ONE PLACE AS SHOWN

TOLENCANCES UNLESS OTHERWISE SPECIFIED		PROFESSIONAL INSTRUMENTS COMPANY 4801 HIGHWAY 77, MINNEAPOLIS, MINNESOTA 55416	
FINISH SURF TO FULL FINISH UNFINISH UNLESS OTHERWISE SPECIFIED	TOLERANCE ± 1/32"	SCALE 1=1	DRAWN BY J. NEHER
TITLE CHOPPER SPINDLE WITH VACUUM CHAMBER		DATE 9/13/2006	
CHECKED ✓	APPROVED 5"	DRAWING NUMBER 50-61911-740	REV B