

SUGGESTED WIRE STRIP LENGTH SCALE 10:1

PLATING TABLE		
CATALOG NUMBER	PLATING	
SM14M/ML-1D70	AREA 1 - 5 MICRO-INCHES [0.13 MICRONS]- 15 MICRO-INCHES [0.38 MICRONS] GOLD OVER NICKEL	STANDARD PLATING
SM16M-11D70		
SM16M/ML-1D70		
SM20M/ML-1D70		
SM24M/ML-1D70	AREA 2 - GOLD FLASH	STANDARD PLATING
SM14M/ML-1TK6		
SM16M-11TK6		
SM16M/ML-1TK6		
SM20M/ML-1TK6	TIN PLATED	STANDARD PLATING
SM24M/ML-1TK6		
SM14M/ML-1S6		
SM16M-11S6		
SM16M/ML-1S6	AREA 1 - 30 MICRO-INCHES [0.76 MICRONS]- 50 MICRO-INCHES [1.3 MICRONS] GOLD OVER NICKEL	SELECTIVE PLATING
SM20M/ML-1S6		
SM24M/ML-1S6		
SM24M/ML-1S6		

NOTES: UNLESS OTHERWISE SPECIFIED.

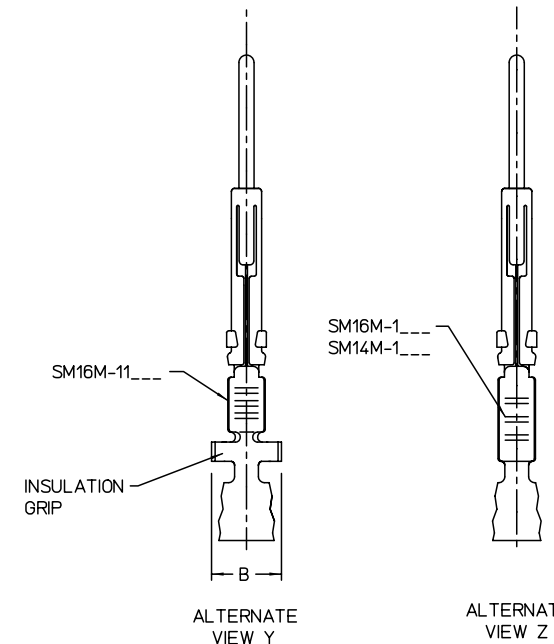
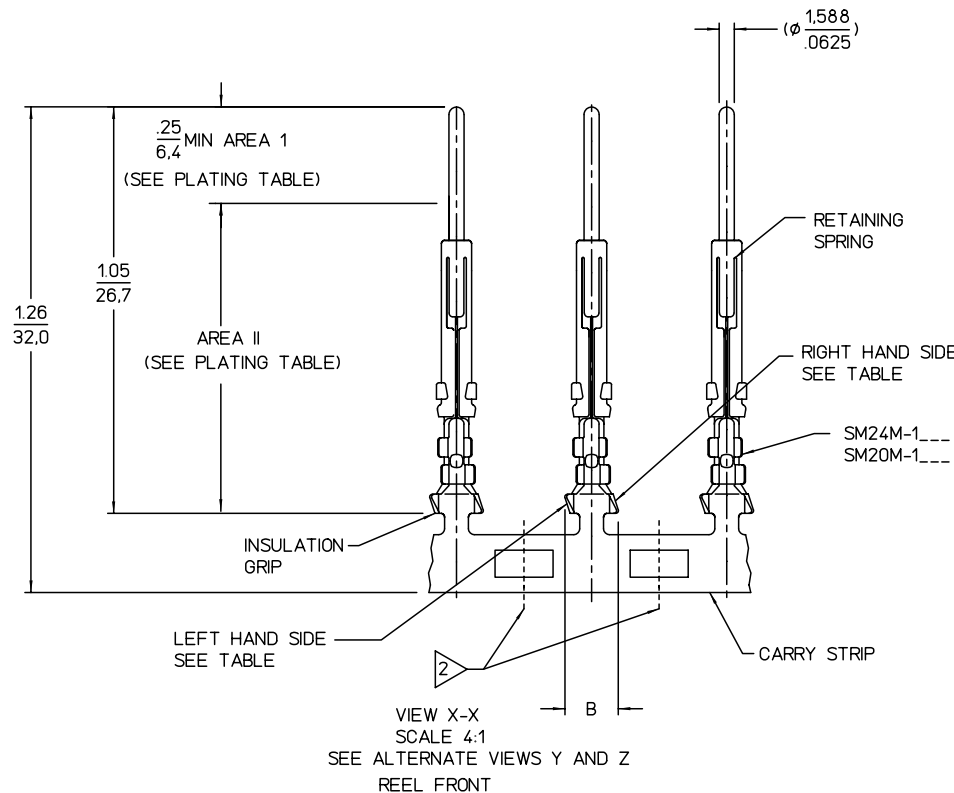
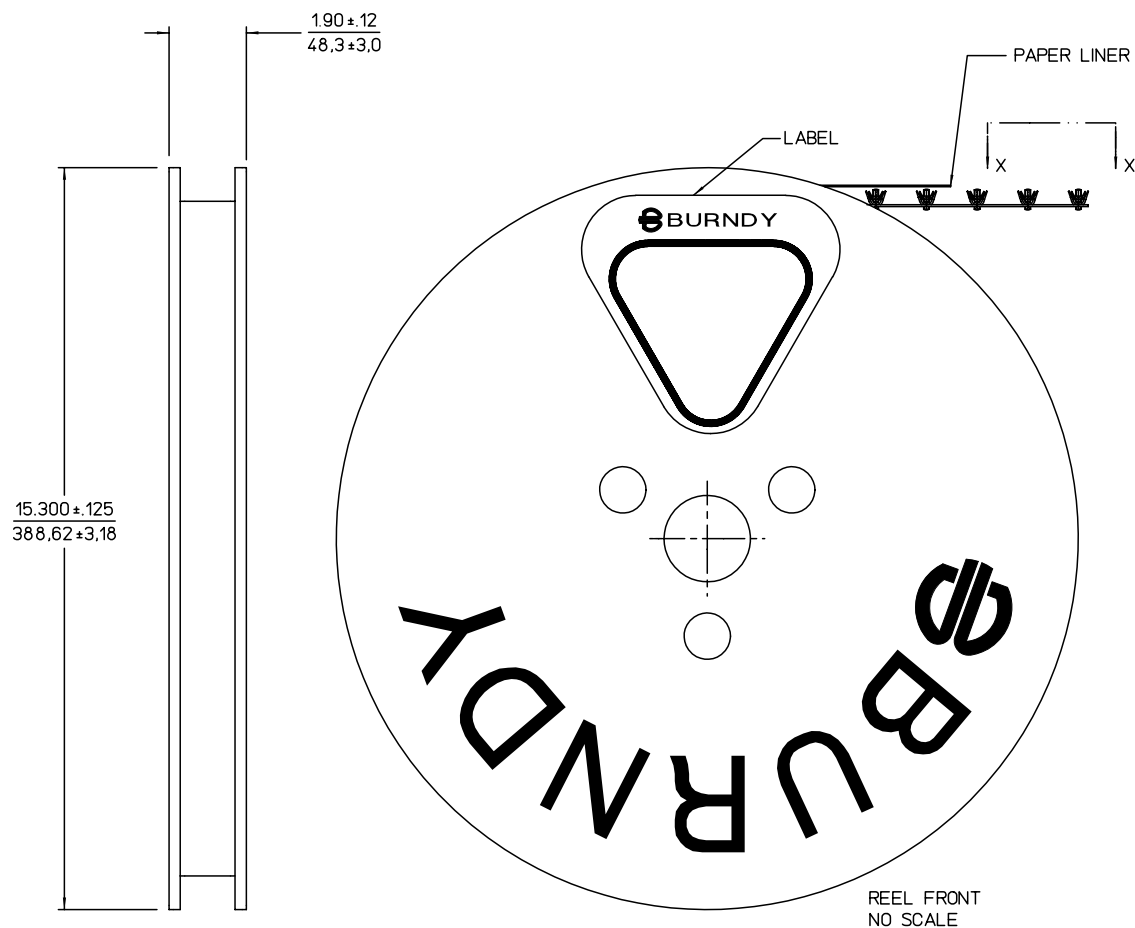
- CONTACTS ARE FURNISHED ON A STRIP, TO BE INSTALLED BY THE UTM-2 INSTALLATION MACHINE.
- FOR M8ND AND Y8ND HAND TOOL USE, CONTACTS MUST BE CUT FROM STRIP THROUGH SELVAGE AS INDICATED BY DASH LINES. REMAINING PIECE OF CARRY STRIP IS USED AS A LOCATOR IN THE HAND TOOL, AND CAN BE EASILY REMOVED AFTER INSTALLATION BY BENDING UNTIL IT BREAKS OFF.
- SM_ML-6 CONTACTS ARE SUPPLIED LOOSE AND WITH MODIFIED CRIMP SADDLES, AND CRIMPED WITH THE Y14MS HAND TOOL.
- SM16M-16 CONTACT CAN BE ACCOMMODATED BY QIKMATE CONNECTORS, WHEN INSULATION DIAMETER RANGE IS .082 - .118 [2.08-3.00]. FOR OTHER TRIM TRIO CONNECTORS, MAXIMUM INSULATION DIAMETER IS .103[2.62].
- CONTACTS ARE INSTALLED BY HAND, AND SNAP LOCKED IN PANELS. AN EXTRACTION TOOL IS USED TO REMOVE CONTACTS FROM PANELS.
- INTERPRET THIS DRAWING IN ACCORDANCE WITH ANSI Y14.5M 1982.

MATERIAL:

CONTACT- BRASS
RETAINING SPRING- STAINLESS STEEL

FINISH:

CONTACT- SEE PLATING TABLE



CONTACT CATALOG NUMBER	WIRE SIZE AND TYPE	CABLE INSULATION ACCOMMODATION		QTY. PER REEL	STAMPING		'A' ±.016 ±0.40	'B'	INSTALLATION TOOL			EXTRACTION TOOL
		MAX.	MIN.		LEFT-HAND SIDE	RIGHT-HAND SIDE			HAND TOOL	UTM-2 CRIMP MECHANISM		
3 SM24M-1	26-24 AWG	.062 [1.57]	.035 [0.89]	3000	24	26	.156 3.96	.128 3.25	N24RT-11	Y14MS	CM11G1	RX16D11D1
SM24ML-1												
3 SM20M-1	22-20 AWG	.082 [2.08]	.046 [1.17]	3000	20	22	.156 3.96	.139 3.53	N20RT-29	Y14MS	CM11	
SM20ML-1												
3 SM16M-1	18-16 AWG	.118 [3.00]	.082 [2.08]	3000	16	18	.250 6.35	.146 3.71	N16RT-24	Y14MS	CM27	
SM16ML-1												
4 SM16M-11	18-16 AWG	.118 [3.00]	.082 [2.08]	3000	16	18	.188 4.78	.146 3.71	N16RT-26	Y14MS	CM11	
SM16ML-1												
3 SM14M-1	14 AWG	.118 [3.00]	.082 [2.08]	3000	14	14	.250 6.35	.146 3.71	N14RT-13	Y14MS	CM11	
SM14ML-1												

SUPERSEDES: SE52182 REV 20

REFERENCE:

SE52184, SM_M/ML-1
BRSE82427, SM/SC_M-
SD61512, SM/SC_M-
SA82878, SC/SM_M-3

LINEAR MEASURE:	INCH	INCH (mm)
THIRD ANGLE PROJECTION		
- TOLERANCES - UNLESS OTHERWISE SPECIFIED		
NO. OF DECIMAL PLACES IN INCHES	INCH [mm]	
ONE PLACE	±.1 [±3]	
TWO PLACES	±.02 [±0.5]	
THREE PLACES	±.005 [±0.13]	
ANGLES ±1°		

22	"CONTACT - BRASS" WAS "CONTACT-BRASS PER QQ-B-613b", UPDATED PLATING TABLE AND DWG PER ECN 4685	AGB	RXM	09-22-00
21	ADDED AREA III & AREA IV PER (ECN3640)	NL	RXS	03-07-97
20	REDRAWN ON CAD, ADDED NOTE 6 (ECN 3129)	CL	PJB	10-31-94
REV	REVISION DESCRIPTION	BY	CHKD	DATE

STRIP HYFEN PIN REEL ASSEMBLY

CAT NO SM_M/ML- (SEE TABLE)

DWG RELEASED TO CENTRAL FILE 10-31-94

CAGE NO 09922 | ECN 3129 | PC 833

© BURNDY CORPORATION 1994

BURNDY

FCI
FRAMATOME CONNECTORS INTERNATIONAL

DRWN	DA 9-30-83
CHKD	SFP 10-20-83
DSGN	CS 10-20-83
MKT	MG 10-27-94
QC	SJ 10-27-94
DRAWING SCALE NONE	
DRAWING NO	REV
SE52182	22
SHEET 1 OF 1	