

SUGGESTED WIRE STRIP LENGTH
SCALE 10:1

PLATING TABLE		
CATALOG NUMBER	PLATING	
SC14M/ML-1D70	AREA 1 - 5 MICRO-INCHES [0.13 MICRONS]- 15 MICRO-INCHES [0.38 MICRONS] GOLD OVER NICKEL	STANDARD PLATING
SC16M/ML-1D70		
SC20M/ML-1D70		
SC24M/ML-1D70		
SC14M/ML-1TK6	AREA 2 - GOLD FLASH	STANDARD PLATING
SC16M-1TK6		
SC16M/ML-1TK6		
SC20M/ML-1TK6		
SC24M/ML-1TK6	TIN PLATED	STANDARD PLATING
SC14M/ML-1S6		
SC16M-1S6		
SC16M/ML-1S6		
SC20M/ML-1S6		
SC24M/ML-1S6		
SC14M/ML-1S6	AREA 1 - 30 MICRO-INCHES [0.76 MICRONS]- 50 MICRO-INCHES [1.3 MICRONS] GOLD OVER NICKEL	SELECTIVE PLATING
SC16M-1S6		
SC16M/ML-1S6		
SC20M/ML-1S6		
SC24M/ML-1S6	AREA 2 - GOLD FLASH	SELECTIVE PLATING

NOTES: UNLESS OTHERWISE SPECIFIED.

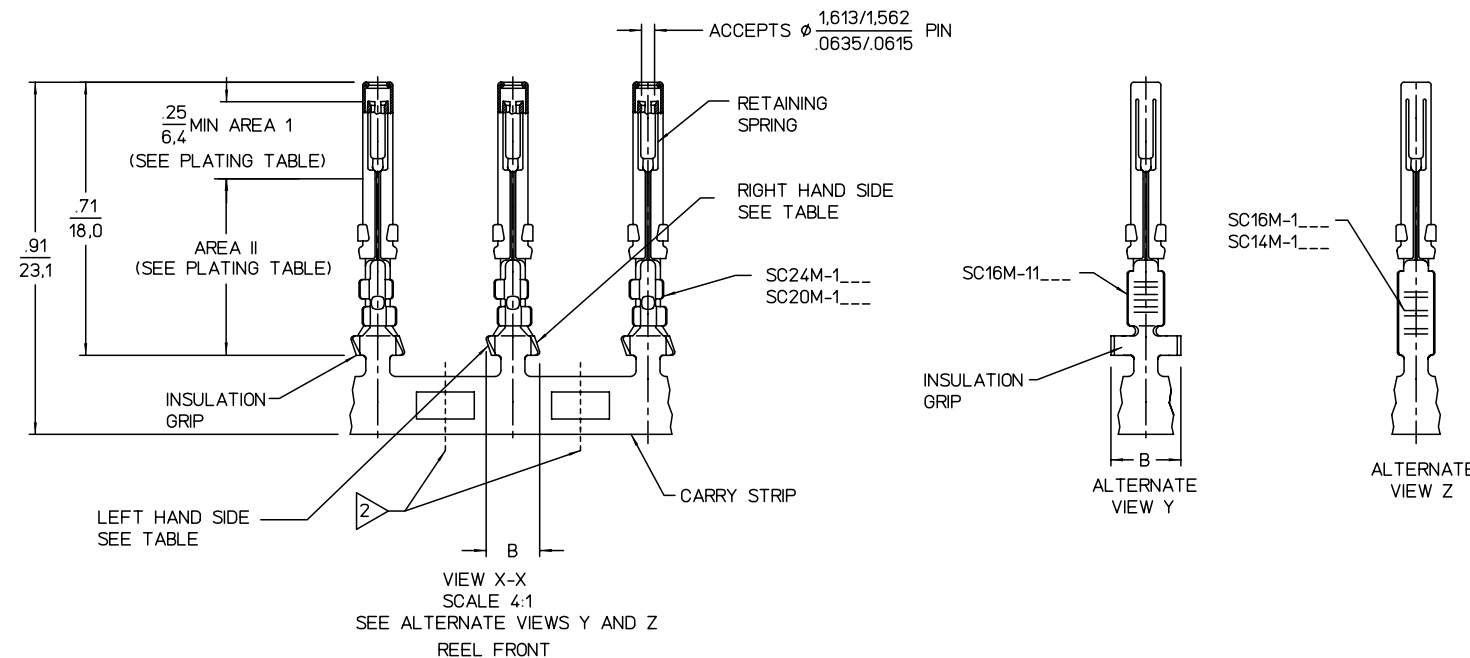
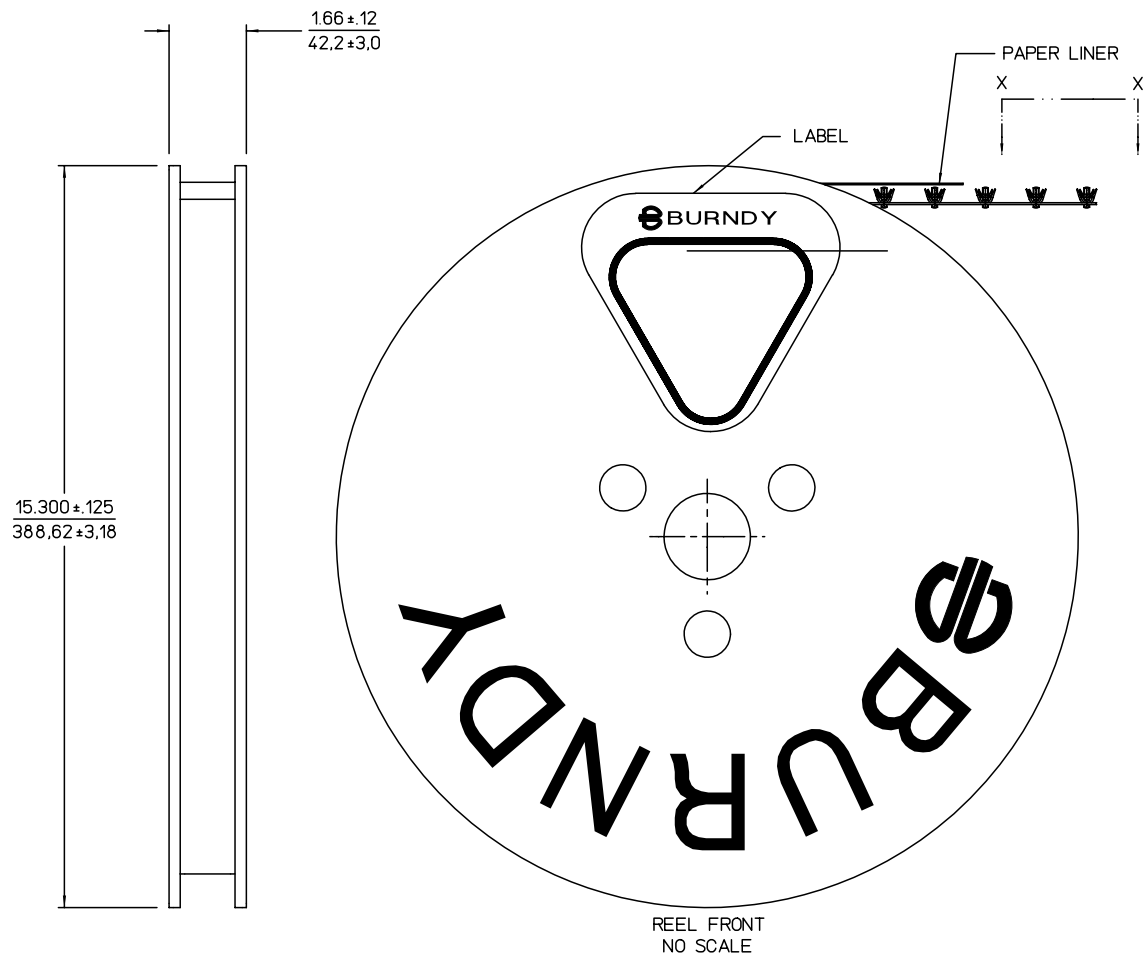
- CONTACTS ARE FURNISHED ON A STRIP, TO BE INSTALLED BY THE UTM-2 INSTALLATION MACHINE.
- FOR M8ND AND Y8ND HAND TOOL USE, CONTACTS MUST BE CUT FROM STRIP THROUGH SELVAGE AS INDICATED BY DASH LINES. REMAINING PIECE OF CARRY STRIP IS USED AS A LOCATOR IN THE HAND TOOL, AND CAN BE EASILY REMOVED AFTER INSTALLATION BY BENDING UNTIL IT BREAKS OFF.
- SM_ML-6 CONTACTS ARE SUPPLIED LOOSE AND WITH MODIFIED CRIMP SADDLES, AND CRIMPED WITH THE Y14MS HAND TOOL.
- SM16M-16 CONTACT CAN BE ACCOMMODATED BY QIKMATE CONNECTORS, WHEN INSULATION DIAMETER RANGE IS .082 - .118 [2.08-3.00]. FOR OTHER TRIM TRIO CONNECTORS, MAXIMUM INSULATION DIAMETER IS .103[2.62].
- CONTACTS ARE INSTALLED BY HAND, AND SNAP LOCKED IN PANELS. AN EXTRACTION TOOL IS USED TO REMOVE CONTACTS FROM PANELS.
- INTERPRET THIS DRAWING IN ACCORDANCE WITH ANSI Y14.5M 1982.

MATERIAL:

CONTACT- BRASS
RETAINING SPRING- STAINLESS STEEL

FINISH:

CONTACT- SEE PLATING TABLE



CONTACT CATALOG NUMBER	WIRE SIZE AND TYPE	CABLE INSULATION ACCOMMODATION		QTY. PER REEL	STAMPING		*A* ±.016 ±0.40	*B*	INSTALLATION TOOL			EXTRACTION TOOL
		MAX.	MIN.		LEFT-HAND SIDE	RIGHT-HAND SIDE			HANDTOOL M8ND OR Y8ND DIE SET CAT NUMBER	HANDTOOL	UTM-2 CRIMP MECHANISM	
SC24M-1	26-24 AWG	.062 [1.57]	.035 [0.89]	3000	24	26	.156 3.96	.128 3.25	N24RT-11	Y14MS	CM11G1	RX16D11D1
SC24ML-1												
SC20M-1	22-20 AWG	.082 [2.08]	.046 [1.17]	3000	20	22	.156 3.96	.139 3.53	N20RT-29	Y14MS		
SC20ML-1												
SC16M-1	18-16 AWG			3000	16	18	.250 6.35		N16RT-24	Y14MS	CM11	
SC16ML-1												
SC16M-11	18-16 AWG	.118 [3.00]	.082 [2.08]	3000	16	18	.188 4.78	.146 3.71	N16RT-26		CM27	
SC14M-1	14 AWG			3000	14	14	.250 6.35		N14RT-13	Y14MS	CM11	
SC14ML-1												

SUPSEDES: SE52184 REV 21

REFERENCE:
SE52182, SM_M/ML-
BRSE82427, SM/SC_M-3
SD61512, SM/SC_M-
SA82878, SC/SM_M-3

LINEAR MEASURE:	INCH	INCH (mm)
THIRD ANGLE PROJECTION		
- TOLERANCES - UNLESS OTHERWISE SPECIFIED		
NO. OF DECIMAL PLACES IN INCHES	INCH [mm]	
ONE PLACE	±.1 [±3]	
TWO PLACES	±.02 [±0.5]	
THREE PLACES	±.005 [±0.13]	
ANGLES ±1°		

23	"CONTACT - BRASS" WAS "CONTACT BRASS PER Q0-B-613b", UPDATED PLATING TABLE AND DWG PER ECN 4685	AGB	RXM	09-22-00
22	ADDED AREA III & AREA IV (ECN3640)	NL	RXS	03-06-97
21	REDRAWN ON CAD, ADDED NOTE 6 (ECN3129)	CL	PJB	10-31-94
REV	REVISION DESCRIPTION	BY	CHKD	DATE

STRIP HYFEN SOCKET REEL ASSEMBLY

CAT NO SC_M/ML- (SEE TABLE)

DWG RELEASED TO CENTRAL FILE 10-31-94

CAGE NO 09922 | ECN 3129 | PC 733

© BURNDY CORPORATION 1994

BURNDY

FCI
FRAMATOME CONNECTORS INTERNATIONAL

APPROVAL	DRWN DA 9-30-83
CHKD SFP 10-20-83	
DSGN CS 10-20-83	
MKT MG 10-27-94	
QC SJ 10-27-94	
DRAWING SCALE NONE	
DRAWING NO	REV
SE52184	23
SHEET 1 OF 1	